



The L5 Laser

- Laser technique for extended range, height and angle measurements
- Rugged, reinforced, high-visibility blue and shockproof housing
- Bluetooth® and IR communication
- Data storage capacity
- Data processing capacity
- Hazard trees safety distance, tree limit, line clearance
- Delta height calculation
- Red cross aim for easy spotting of thin objects
- Adjustable laser filter
- Rechargeable built-in Li-Ion battery
- Easy operation with field adapted keypad and step-through menu
- Perfect for logging/wood industry, power distribution, pole control, shooting ranges, construction, planning, mining industry, etc.
- Choose if to save and process measurement results in the instrument or transfer with built-in IR or Bluetooth®
- Custom order measurement functions
- Optional accessories include camera-type monopod with foot bracket for direct use on instrument for a steadier aim.



For control work in utility industry, the L5 laser will be a great choice of instrument solution because of its high accuracy and easy use. Hazard trees/border trees and safety distances can be measured and evaluated for accident prevention and to secure power lines, railways and roads. With the instrument storing and processing capacity, special functions can be custom ordered, programmed and implemented, for example to calculate pile volume on paper and pulp industries.

TECHNICAL SPECIFICATION LASER L5 Bluetooth®

Size:	93x63x72mm / 3.7x2.5x2.8"
Weight:	243 g/8.6oz.
Battery and consumption:	Rechargeable Li-Ion 3.7V, built-in, approx. 9000 measurements. Charging time max 3.5h. USB mini B interface wall charger 110/220AC/5VDC; car charger adapter 12VDC. Cable Usb mini B Male/Usb Type A Male, 0.5m. Consumption max 0.9W.
Communication:	IR, Bluetooth® class 2, Spp (serial profile), pincode 12345.
Temperature:	-20° to +45° C / -4° F -113° F.
Height:	0-999 m/ft. Resolution height: 0.1 m/ft.
Angle:	-55° - 85°. Unit: Degrees 360°, Grads 400° and %. Resolution: 0.1°. Accuracy: 0.1°.
Laser:	Distance: 46cm/1.5ft - 700m/2000ft depending on target. Accuracy: 4cm/0.1ft. Resolution: 0.1m/ft.
Classification:	MIL-STD-810E. Housing frame material glass filled poly carbonate, IP67, NEMA6, Laser class 1, 7mm (FDA, CFR21) Class 1m (IEC 60825-1:2001).
Sight:	LED crosshairs 1 x magnification.
Display:	Graphic LCD 100x60pixels.
Dataformat:	Nmea or Ascii.
Memory:	2000 dataset, non-volatile.
Other information, details, accessories etc.	Camera-type monopod 15-103-1531. Aluminum transport/storing case. See user manual for more details.

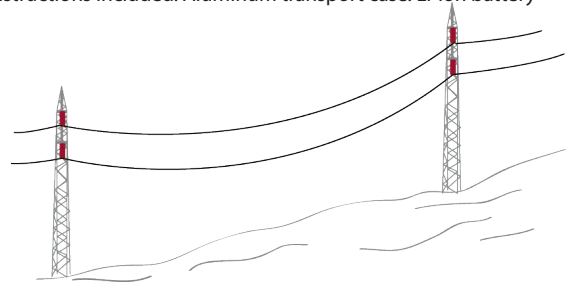
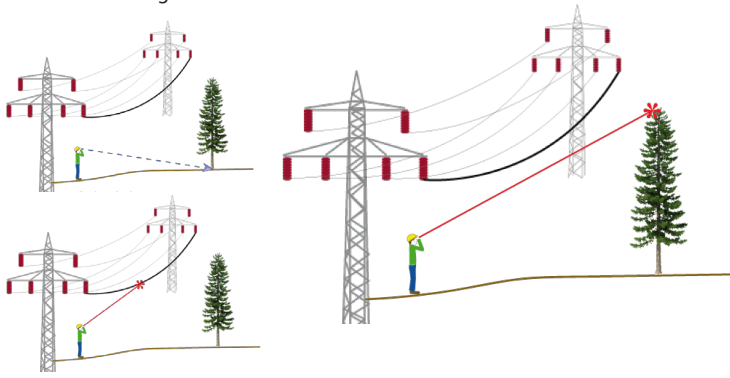


The L5 Laser instrument is especially adapted for long range measurement in open areas. Measures distances from approx. 0.5m/1.5ft up to 700 meters/2300ft and longer with extra high accuracy. The L5 instrument will be useful within many professions and work areas, for example within the utility industry, controlling power line and for accident prevention.

A laser filter allows for flexible measuring, where you can select to measure the closest object, the farthest object or the object that submits the strongest signal.

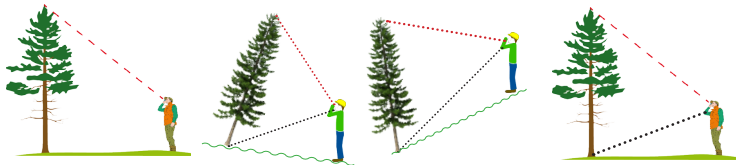
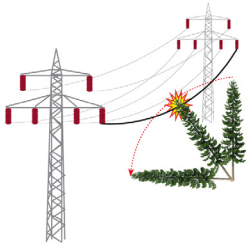
The L5 has a built-in Li-Ion rechargeable battery. An illuminated adjustable sighting cross improves sighting and spotting of individual lines and other objects. The L5 instrument is rugged with a reinforced and stabilized housing. IP67 water resistant, with user friendly interface, fully integrated technology, and built-in mounting point for camera-type monopod if a steadier aim is required. The L5 includes several integrated special functions for added value. With the possibility to store and process data in the L5, custom adapted instrument functions can be ordered, for example to calculate pile volume on paper and pulp industries.

L5 15-103-1030 package/set incl. L5 instrument, charging cable with adapter. User instructions included. Aluminum transport case. Li-Ion battery built-in measuring instrument.



Tree Limit for hazard trees
The L5 includes an integrated function for accident prevention work. The Tree Limit function is used to calculate a safety distance for borderline trees along highways, power lines and railways.

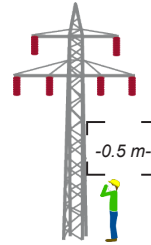
Delta Height
The L5 includes an integrated function to measure line sag. The function is called Delta Height and mainly used for regular maintenance work and control operations along power lines. The Delta Height equals an estimated height difference between a point on an imagined straight line between two fixed points, and a third point, for example a power line, where the line sag is the closest to the ground.



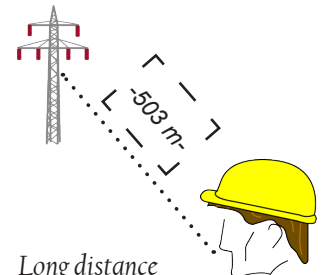
One-point measuring with laser

Two-point measuring for leaning trees, on hills and on slopes with laser

Three-point measuring with laser



Short distance with laser



Long distance with laser



For a steady aim, use the camera type monopod with a footstep bracket, art. no. 15-103-1531.



The L5 Laser instrument is especially suitable for control measurements and utility work. The L5 has a custom built-in mounting point to fasten a monopod for a steadier aim (accessory, art no 15-103-1531). The illuminated red cross aim with a 1x magnification improves sighting and spotting of individual trees and thin lines.

The L5 has built-in Li-Ion battery, that can be charged in the office, the car or with a portable power bank. The instrument is delivered with charging cable and in a special safety case for storing and transport. Portable power bank emergency charger, art. no. 13-600-1070. Car charger art. no. 13-600-1069.